

# INTRODUCTION

We are family owned business company diversified into various business activities such as:

- Liaison Consultancy (S.W.T.)
- Imports and Exports (SMT Exports)
- BHEL Ancillary (SMT)
- Hotels (Ganga Azure, Ganga Heritage)
- Education (SGPS, Bhagwanpur)



**S.W.T. Liaison Consultancy  
&  
S.M.T. Exports**

# Turbine Blades



**Rotor Blades**



**Steam Turbine  
Blades**



**Steam Turbine  
Blades**

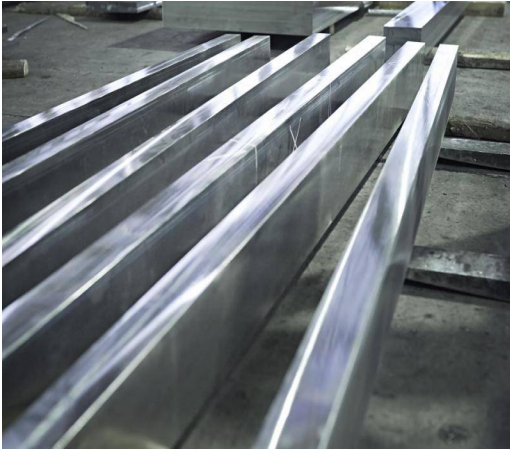


**High Speed Steam  
Turbine Blades**



**Gas Turbine Compressor  
Blades**

# Blade Material



# Turbine Insulations



# HP/IP/LP By Pass System



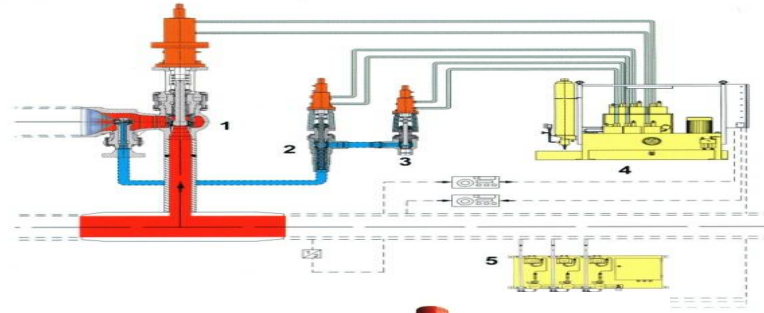
1. HP Safety Steam Converting Valve Type 700



2. Cooling Water Control Valve



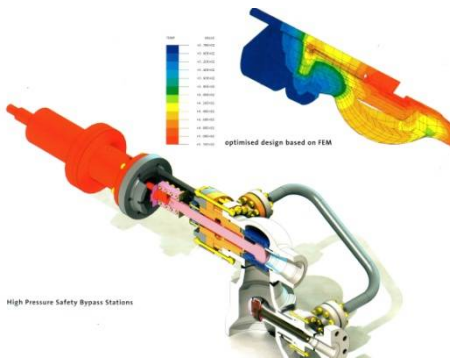
3. Shut-off Valve



5. Steam Pressure Test Device



4. Hydraulic Station



High Pressure Safety Bypass Stations

High Pressure Safety Bypass Stations



LP Bypass Station



Reheater Safety Station

# Compensator & Pipe Assembly

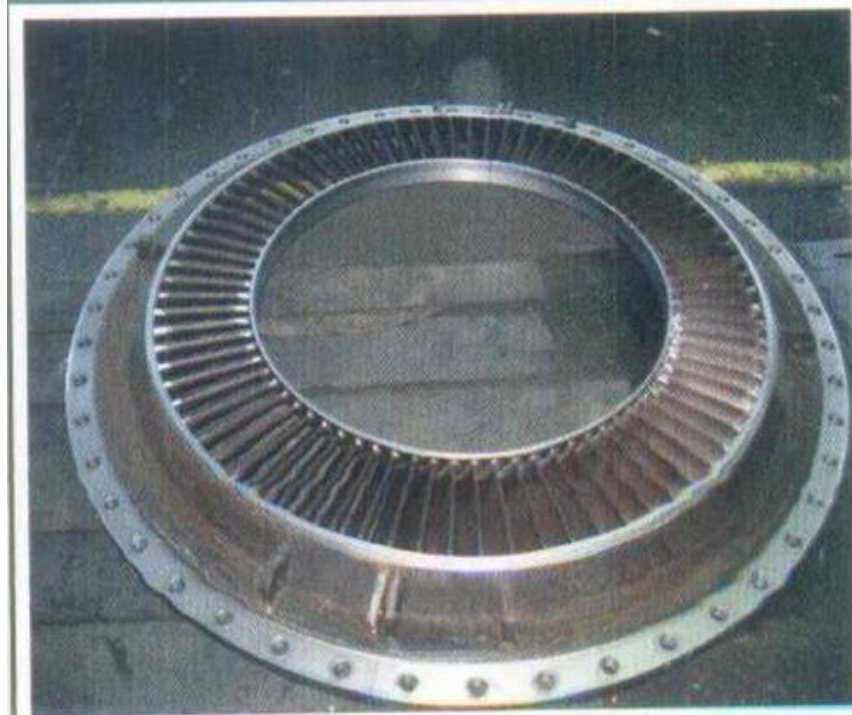


# Angle Drain Valves





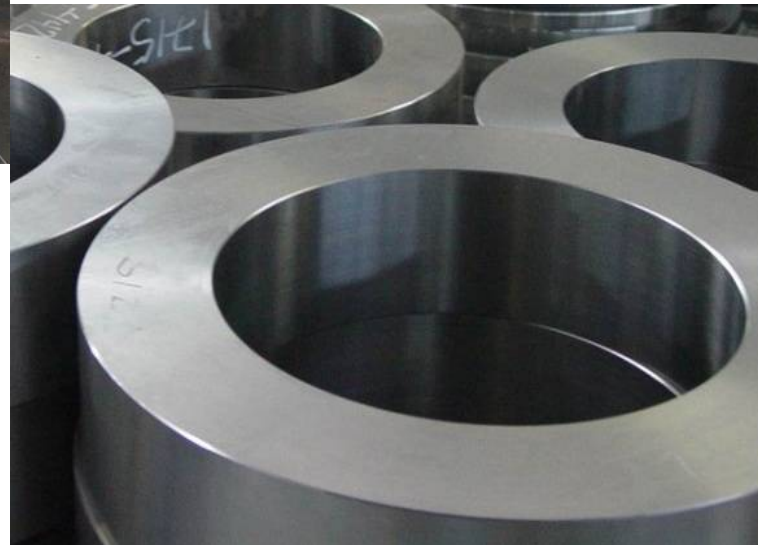
# Guide Blade Carriers / LP Rings



# Stationary Blades / Forged Machined Nozzle Rings



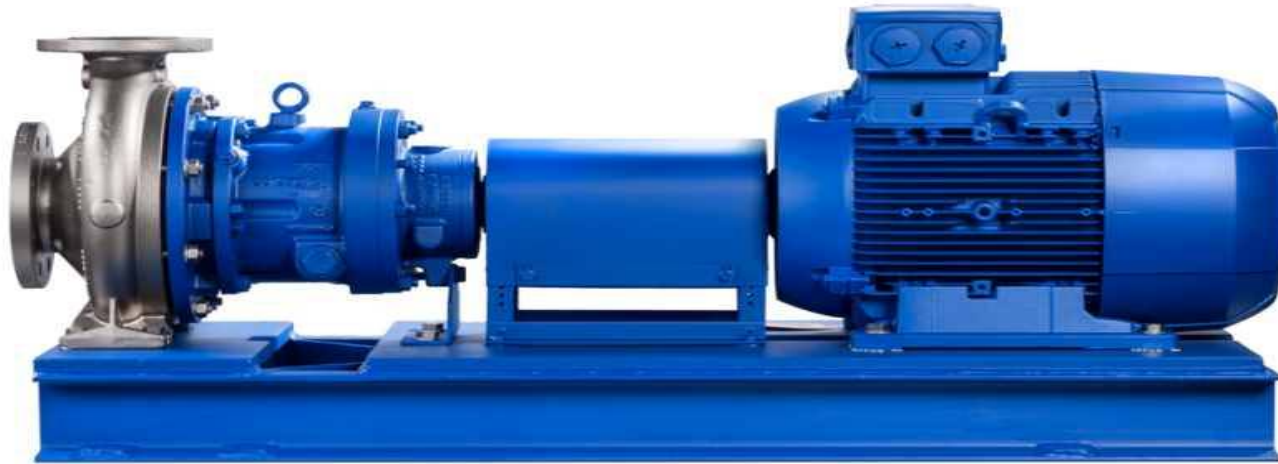
# Forged Nimonic Rings, Seal Ring



# Hydraulic Hose Line



**Control Fluid Pump, Boiler Circulating Water Pump, Boiler Feed Water Pump & AOP+EOP Pumps**



# Balancing Tunnel



# Weld Overlay Machine

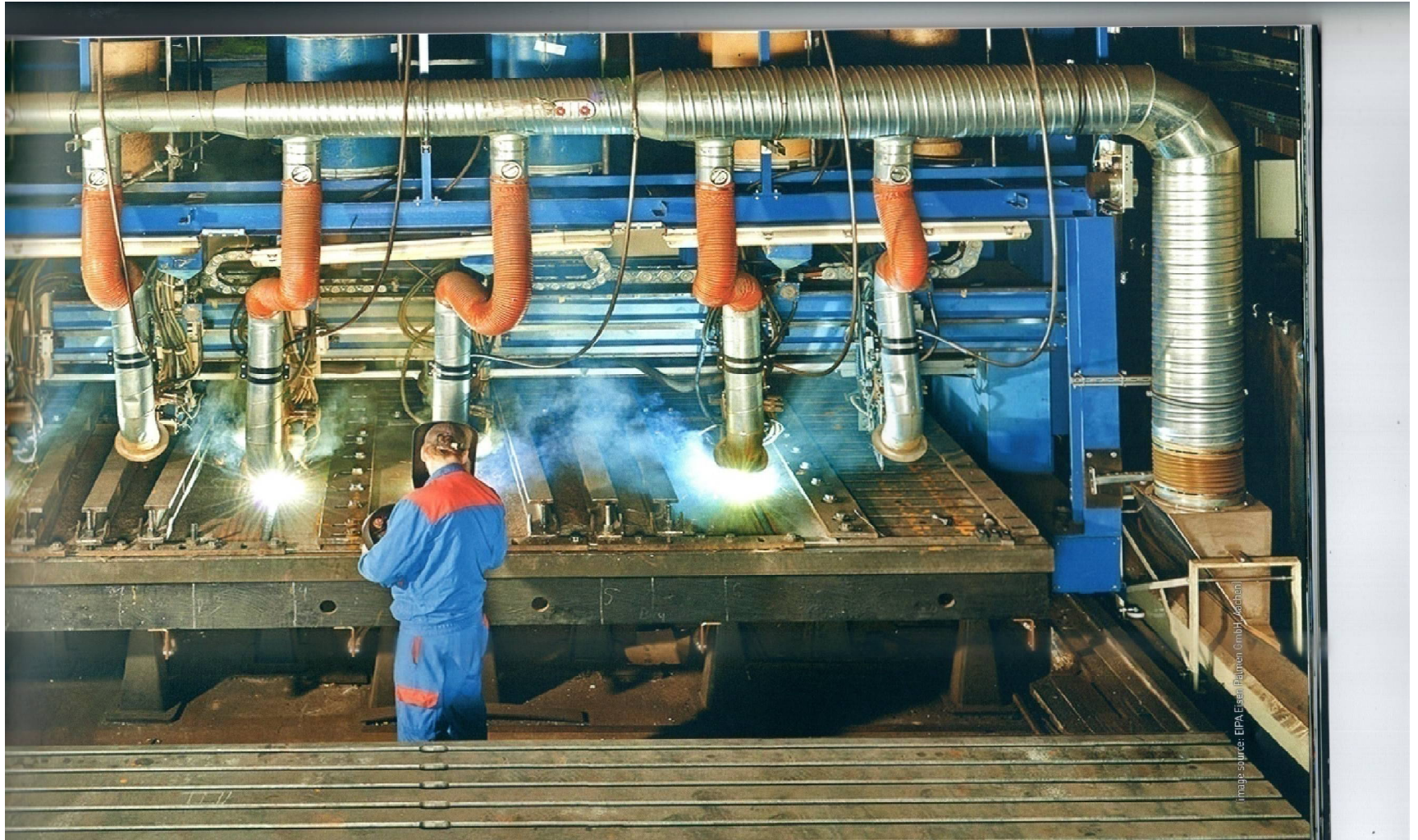


image source: EPA, Eisenbahnen GmbH, Gschöb

# Shyam Machine Tools



Inspection Glass Assembly



Flanges





- Shyam Machine Tools is an ancillary unit of M/s Bharat Heavy Electricals Ltd. and is situated at B.H.E.L. Ancillary Estate Ranipur Haridwar with a high level of commitment to serve BHEL.
- Company deals in Gas Distributors and Seal Oil Systems for 210, 250, 270, 500 and 600 MW Turbine Generator Auxiliaries.
- We have testing facility for Pressure Test & Leakage Test.
- **SMT** is promoted by qualified technocrats having immense experience in global business.

# Shivalik Ganges Public School



**VISION** We have cared to be thoughtful of the society. So we thought to upgrade the social backward youth mentality and their basic education foundation. In view of this we volunteered a high school amidst the most untouched and remote village.

**MISSION** Uttarakhand, a newly developed State has its own recognition in the field of education. The State capital Dehradun is considered to be an education city where not only students from entire country come for education but students come from other countries also for quality education. Roorkee, again a prominent city of the State is well known for higher education. But the semi-urban & rural areas lack to provide good education. Keeping this only in mind the school was planned in Bhagwanpur. The objective behind opening a school in Bhagwanpur is to fulfill the lack of quality education in this area & the inhabitants of the nearby area don't have to go to other towns & they get quality education at their doorstep. The purpose of opening a school at Bhagwanpur is not to earn money but prepare students to face the challenges of the increasing competition in all spheres of life. We will endeavor to prepare the child who not only have the modern knowledge but who is also aware of his traditions and real values of life.

**AIM & OBJECTIVE** Students are taught to reach their highest potential: intellectually, physically, emotionally and spiritually. The aim is to develop the character and individuality of each student. Goal setting, time-management and self service habits are encouraged.

# Hotels

We have diversified ourselves into various other fields to cater the needs of our customers such as to provide them logistics. Therefore we have developed four transit hotels for their accommodation.

## **NEW DELHI**

Hotel Ganga Azure  
E-58, Greater Kailash-1,  
New Delhi- 110048

## **HARIDWAR**

Hotel Ganga Hertiage,  
Near Har Ki Paudi,  
Haridwar-249401



## **HARIDWAR**

Hotel Ganga Azure  
Opp. Rly. Station, Near Shivmurti,  
Haridwar-249401

## **TIRUPATI**

Hotel Ganges,  
Mannavaram, Andhra Pradesh

Thanks for  
your  
Attention